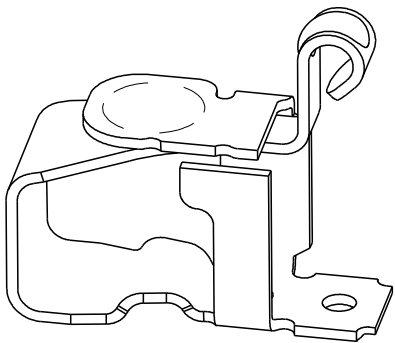
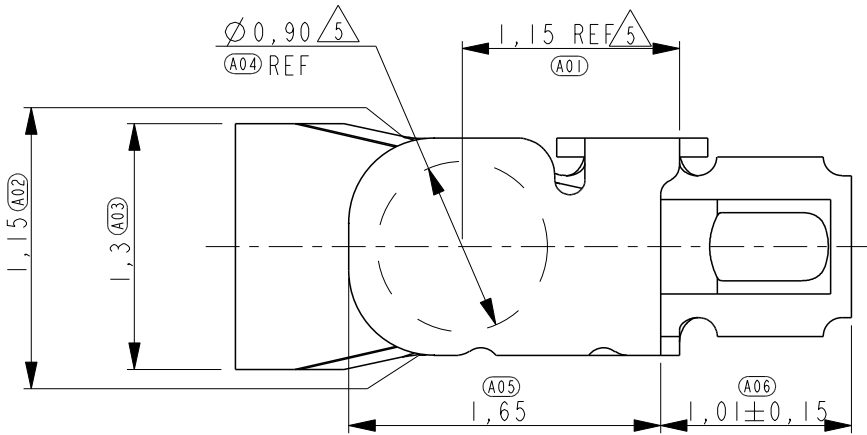


THIS DRAWING IS UNPUBLISHED.

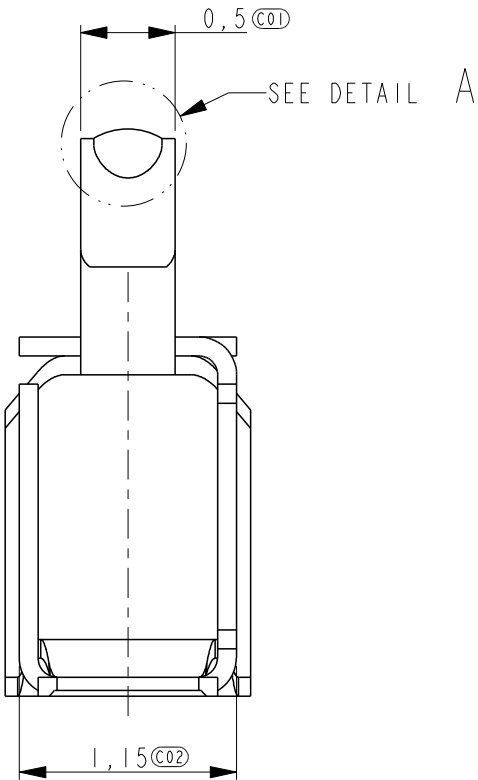
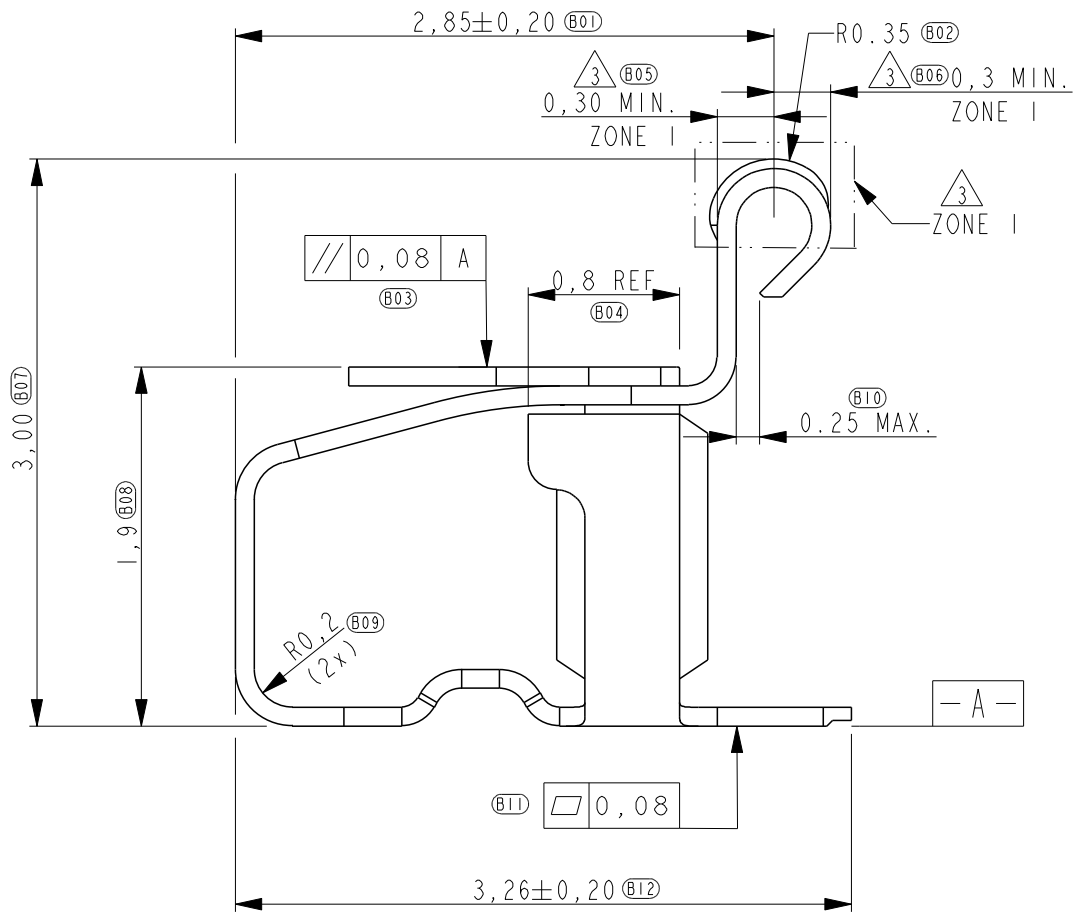
RELEASED FOR PUBLICATION

© COPYRIGHT - BY - ALL RIGHTS RESERVED.

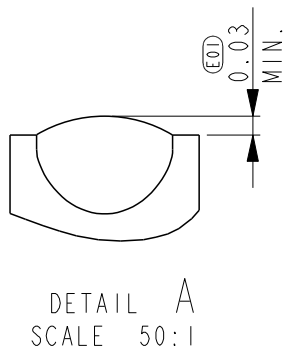
LOC	DIST	REVISIONS					
		P	LTR	DESCRIPTION	DATE	DWN	APVD
ES	00		AI	UPDATED PER ECR-14-004955	27JUL2014	T.Q	W.H



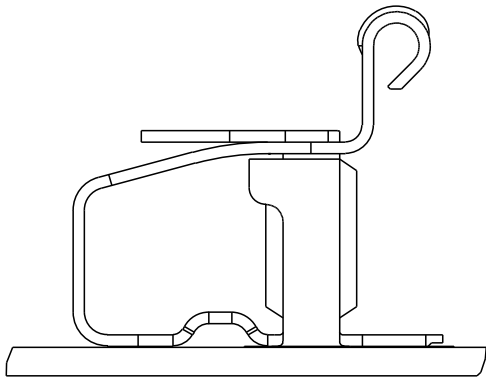
SCALE 15:1



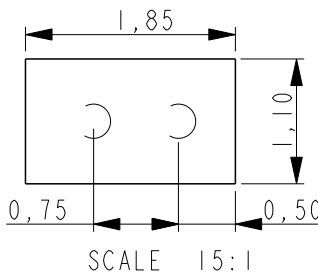
SEE DETAIL A



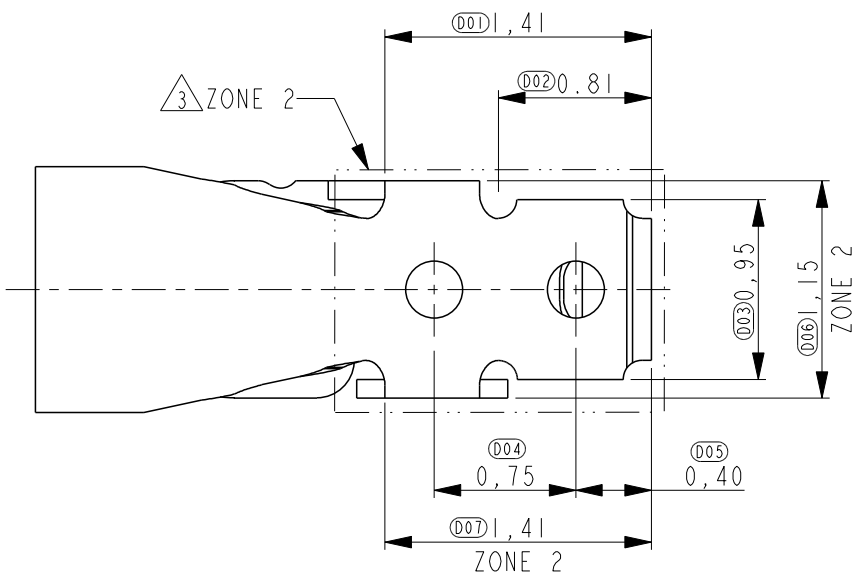
DETAIL A
SCALE 50:1



SCALE 15:1
REFERENCE VIEW FOR
COMPONENT PLACEMENT



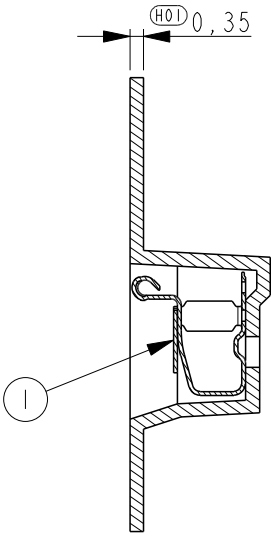
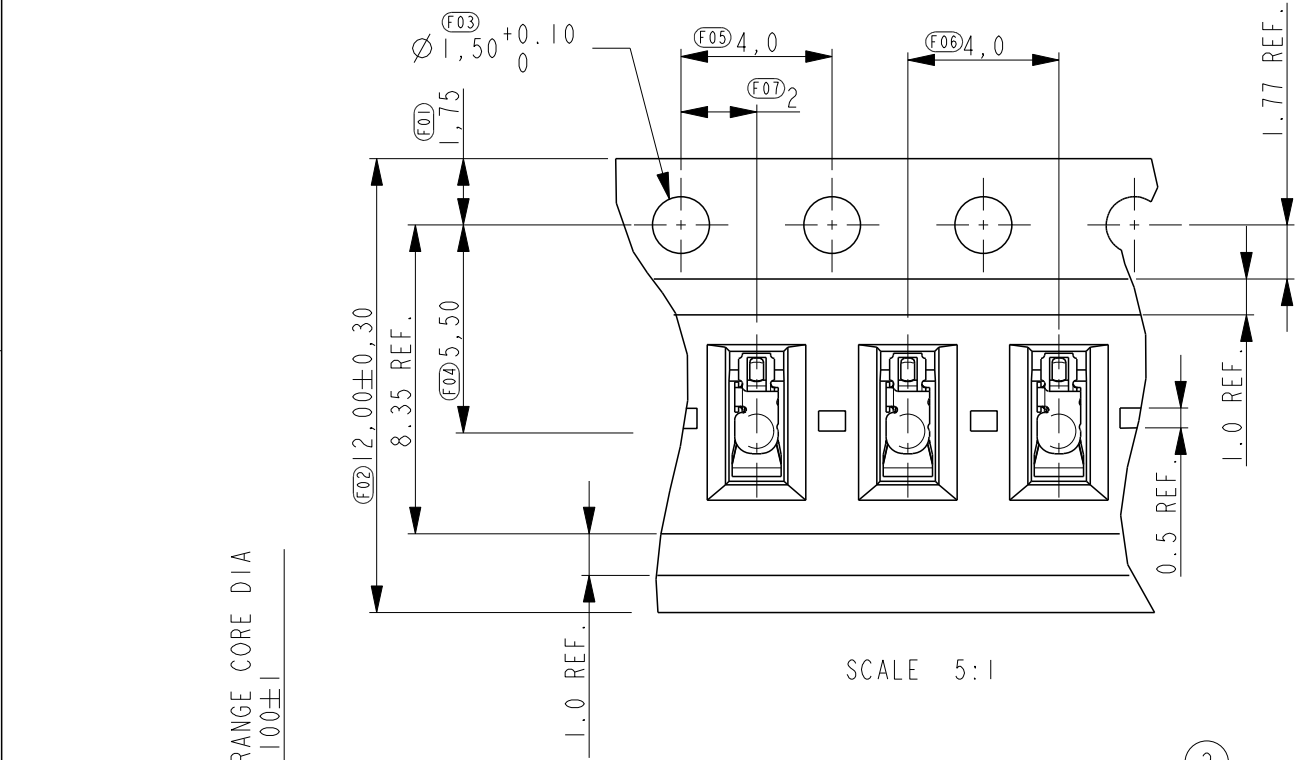
RECOMMENDED PWB LAY-OUT (±0.05)
DASHED CIRCLES ARE THE LOCATION
OF THE SPRING FINGER BOTTOM HOLES



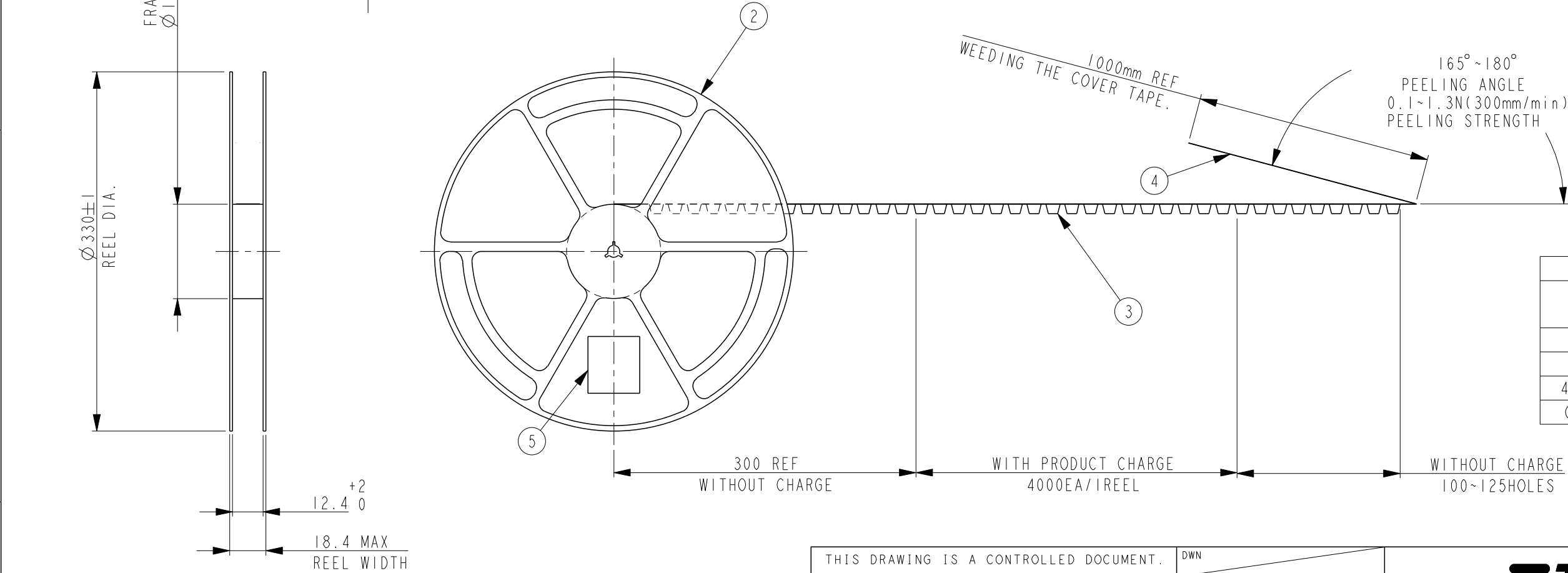
- 1 PART NUMBER: 1551575-5 AS SHOWN.
- 2 MATERIAL: STAINLESS STEEL.
- 3 PLATING: 1,3um MIN. NICKEL UNDERLAYER ALL OVER
ZONE 1: 0,30um MIN. GOLD
ZONE 2: 0.05-0.2um GOLD FLASH
- 4 NORMAL FORCE: 0.6 ± 0.2N AT NOMINAL HEIGHT 2.4MM
- 5 INDICATED SURFACE TO BE USED AS PICK AND PLACE SURFACE.

THIS DRAWING IS A CONTROLLED DOCUMENT.		DWN Tony Zhang 22JUN2010	TE Connectivity			
DIMENSIONS: mm		CHK Harada Yohei 22JUN2010				
TOLERANCES UNLESS OTHERWISE SPECIFIED:		APVD Steven Yao 22JUN2010	NAME SPRING FINGER H=3.0mm			
0 PLC ±0.2 1 PLC ±0.1 2 PLC ±0.1 3 PLC ±0.05 4 PLC ± ANGLES ±5°		PRODUCT SPEC 108-115008	SIZE A3			
MATERIAL 2		APPLICATION SPEC -	CAGE CODE 00779			
FINISH 3		WEIGHT 0.0095	DRAWING NO 1551575			
CUSTOMER DRAWING			SCALE 25:1	SHEET 1	OF 2	REV A1

LOC	DIST	REVISIONS				
ES	00	P	LTR	DESCRIPTION	DATE	APVD
			-	SEE SHEET 1	-	-



SECTION C-C



1	LABEL	5
1	COVER TAPE (HEAT SEALING)	4
1	EMBOSS	3
1	PLASTIC REEL	2
4000	SPRING FINGER	1
QTY	DESCRIPTION	ITEM

THIS DRAWING IS A CONTROLLED DOCUMENT.

DIMENSIONS:
mm

TOLERANCES UNLESS OTHERWISE SPECIFIED:

0 PLC ±0.2
1 PLC ±0.1
2 PLC ±0.1
3 PLC ±0.05
4 PLC ±
ANGLES ±5°
FINISH -

MATERIAL -

DWN

CHK

APVD

PRODUCT SPEC

APPLICATION SPEC

WEIGHT

CUSTOMER DRAWING

TE Connectivity

NAME
SPRING FINGER
H=3.0mm

SIZE
A3

CAGE CODE
00779

DRAWING NO
C-1551575

RESTRICTED TO
-

SCALE
25:1

SHEET
2

OF
2

REV
A1

Mouser Electronics

Authorized Distributor

Click to View Pricing, Inventory, Delivery & Lifecycle Information:

[TE Connectivity:](#)

[1551575-5](#)